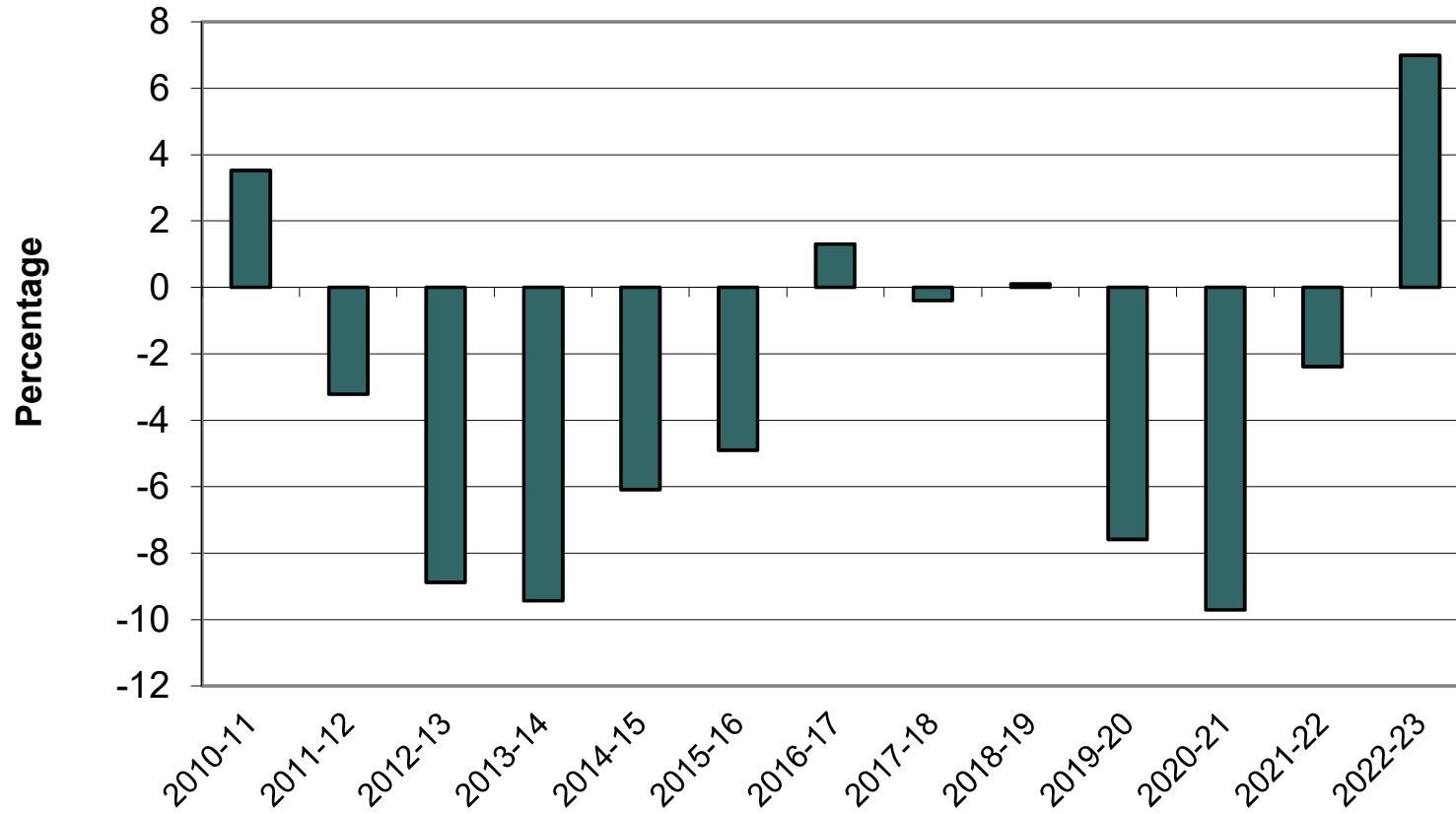


**METROPOLITAN COMMUNITY COLLEGE
FTE STUDENT ENROLLMENT GROWTH**



2021-22 Full-Time Equivalent (FTE) Enrollments in Community College Courses by Category

Category of Courses	Central	Metro	Mid-Plains	Northeast	Southeast	Western	Total	Combined Total	% of Combined Total
Academic									
Academic Transfer	644	1,333	677	1,327	603	505	5,089	5,089	22.6%
Academic Support	367	2,606	20	214	1,651	34	4,892	15,377	68.3%
Undeclared/Non-degree	727	176	26	9	202	3	1,143	1,143	5.1%
Foundations Education	66	393	52	53	291	57	912	912	4.0%
Subtotal: Academic	1,804	4,508	775	1,603	2,747	599	12,036	22,521	
Technology									
Applied Technology (Class 1)	914	1,635	257	562	1,308	158	4,834		
Applied Technology (Class 2)	770	1,949	231	814	1,656	231	5,651		
Subtotal: Technology	1,684	3,584	488	1,376	2,964	389	10,485		46.6%
Total	3,488	8,092	1,263	2,979	5,711	988	22,521	Combined Total for Academic Support equals Academic Support plus Class 1 and 2 Applied Technology courses	
Academic Transfer % of Total FTE	18.5%	16.5%	53.6%	44.5%	10.6%	51.1%	22.6%		

Data Source: Community College Areas' Statements of Reimbursable Full-time Equivalent Student Enrollment and Reimbursable Educational Units Audit

Percentage Change in Full-Time Equivalent (FTE) Enrollments in Community College Courses by Category 1993-94 through 2021-22

Category of Courses	Central	Metro	Mid-Plains	Northeast	Southeast	Western	Total
Academic							
Academic Transfer	165.0%	195.7%	33.5%	161.7%	58.7%	11.0%	100.1%
Academic Support	-31.5%	59.5%	-87.3%	-58.8%	107.2%	-75.9%	29.3%
Undeclared/Non-degree	117.6%	-65.2%	-87.0%	-80.4%	-43.6%	-96.1%	-24.8%
Foundations Education	8.2%	-39.8%	-42.8%	165.0%	686.5%	-22.0%	-2.5%
Subtotal: Academic	53.7%	39.0%	-18.8%	46.7%	74.7%	-19.6%	37.1%
Technology							
Applied Technology (Class 1)	9.0%	38.1%	-22.6%	-2.1%	-5.2%	-10.7%	7.8%
Applied Technology (Class 2)	-19.4%	14.9%	-52.6%	3.3%	-36.2%	-40.8%	-18.2%
Subtotal: Technology	-6.1%	24.5%	-40.4%	1.1%	-25.4%	-31.4%	-8.0%
Total	17.5%	32.2%	-28.8%	21.4%	3.0%	-24.7%	11.6%

Data Source: Community College Areas' Statements of Reimbursable Full-time Equivalent Student Enrollment and Reimbursable Educational Units Audit